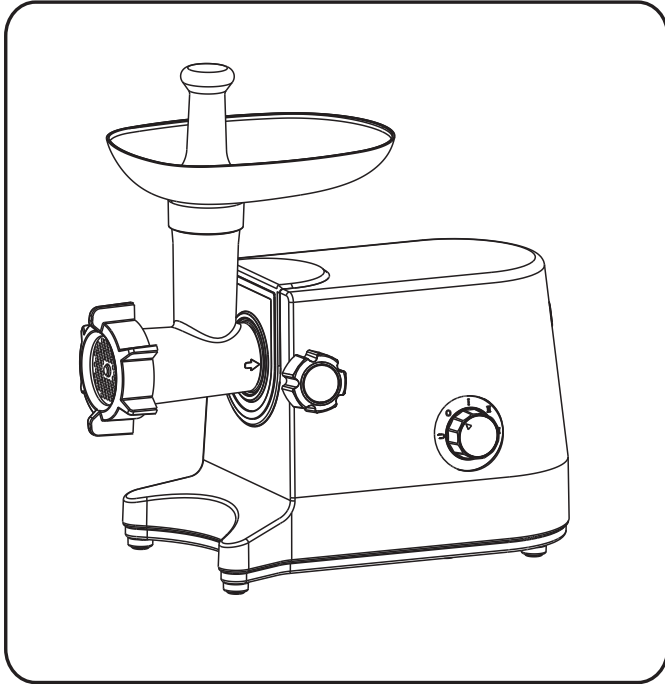
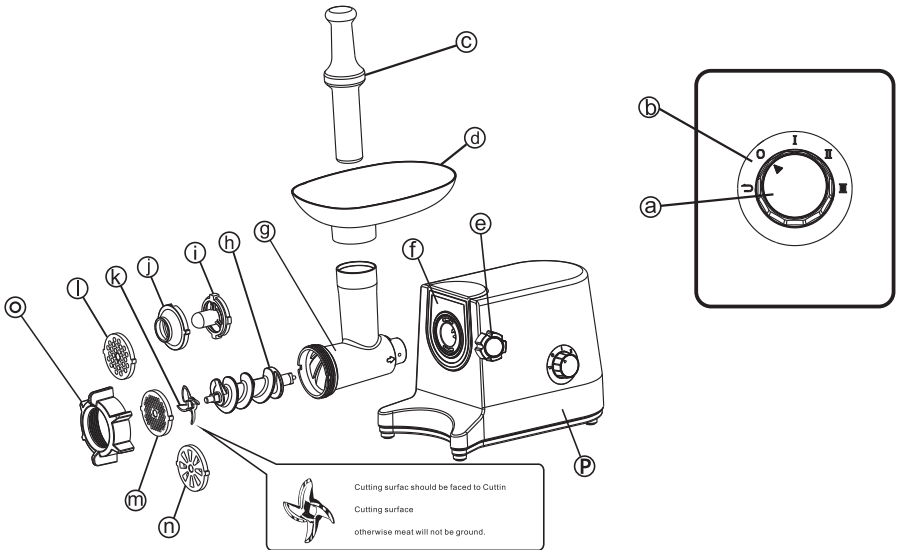


MEAT GRINDER

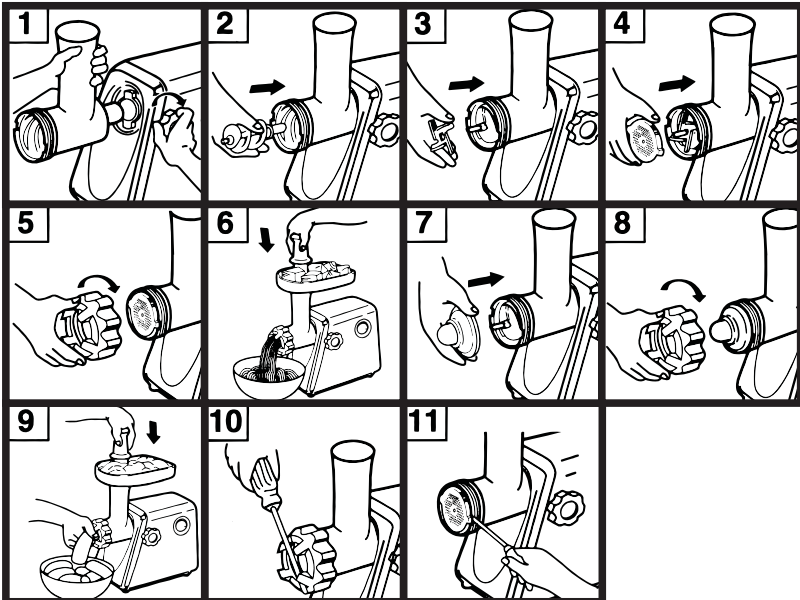


MODEL:MG-350B

INSTRUCTION MANUAL



a. switch button b. gear panel c. food pusher d. hopper plate e. locking knob
 f. decoration ring g. head h. feed screw i. kubbe attachment A j. kubbe attachment B
 k. cutting blade l. cutting plate (medium) m. cutting plate (fine) n. cutting plate (coarse)
 o. cap p. main housing



Caution

- Unplug when assembling or disassembling the unit.
- Close supervision is necessary when any appliance is used near children.
- When carrying the unit, be sure to hold the motor housing with both hands; do not hold only the hopper plate.
- Do not fix the cutting blade and the cutting plate when using the Kubbe attachments.
- Never feed food with hands. Use the food pusher.
- Do not grind hard foods such as bones and nuts. (They will not be ground.)
- Do not grind ginger and other materials with hard fiber. (They will not be ground.)
- To avoid jamming, do not force to operate the unit with excessive pressure.
If the unit jams due to hard materials lodged onto the feed screw or the cutting blade,switch off immediately and clean the unit.
When the circuit breaker activates, do not switch on (See"Caution on Jamming"on page 4.)
- Never try to disassemble or repair the unit by yourself.
- This product is intended for household use only.
- If the supply cord is damaged, it must be replaced by a special cord or a cord assembly available from our dealer/agent.
- Never remove or attach the hopper plate, the head or cap when the motor is operating.
- Do not disassemble the grinder or place anything (especially finger, spoon, fork, etc.) in the grinder during operation.

Before use

Make sure that the voltage and frequency indicated on the bottom are the same as your local supply.

Wash all the parts(except those that do not touch foods

(a, b, e, f, and p) in warm soapy water.

Before plugging in, ensure the switch is off.

To Grind Meat

(Assembling)

- 1** Place the head onto the opening of the motor housing. Holding the head with one hand, place the locking knob into the hole on the side of the motor housing and tighten it clockwise.
- 2** Place the feed screw into the head, long end first, by turning the feed screw slightly until it is set into the motor housing.
- 3** Place the cutting blade onto the feed screw shaft with the blade facing the front as illustrated.
 - If it is not fitted properly, meat will not be ground.
- 4** Place the desired cutting plate next to the cutting blade, fitting protrusions in the slots.
- 5** Screw the cap into place until tight.
 - Do not over tighten.
Place the hopper plate on the head and fix into position.
Set the unit on a firm surface.
• The air passage at the bottom and the side of the motor housing should be kept free and not blocked.

(Grinding Meat)

Cut all foods into pieces so that they fit easily into the hopper opening.

Plug in,then switch on.

- 6** Feed foods into the hopper plate.
Use the food pusher.
After use, switch off and unplug.

Note:

- The grinder head may rotate slightly during use, but it is normal.
Do not over tighten the knob to stop this movement. It may cause damage.

After the machine operates for four hours continually, Please stop for half hour and then you can operate it.

To Make Kubbe

--Recipe--

(Stuffing)

100g	mutton
1 1/2 tablespoons	olive oil
1 1/2 tablespoons	onion(cut finely)
1/3 teaspoon	all spice
1/2 teaspoon	salt
1 1/2 tablespoons	flour

Grind mutton once or twice.

Fry onion until brown and add minced mutton, all spice, salt and flour.

(Outer cover)

450 g	lean meat
150 - 200 g	flour
1 teaspoon	all spice
1	nutmeg
a pinch	powdered red pepper
dash	pepper

Grind meat three times and mix all ingredients together in a bowl.

•More meat and less flour for outer cover creates better consistency and teste.

Grind the mixture three times.

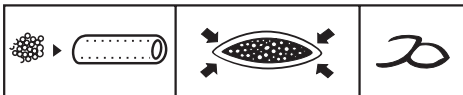
Disassemble by reversing the steps from [5] - [3] to remove the cutting plate and the cutting blade.

7 Place the Kubbe attachments A and B onto the feed screw shaft together, fitting protrusions in the slots.

8 Screw the cap into place until tight.
•Do not over tighten.

9 Following the same steps as in [5] - [6] make the cylindrical outer cover.

Form kubbe as illustrated below and deep fry.



Caution on Jamming

When the circuit breaker automatically stops the motor or when the motor continues to function but no meat comes out of the cutting plate due to jamming of bones or other materials, switch off.

• Do not switch on.

Unplug and clean the unit. (See "How to Clean")

How to Clean

(Disassembling)

Make sure that the motor has stopped completely. Disconnect the plug from the power outlet. Disassemble by reversing the steps from [5] - [1].

10 To remove the cap easily, place a screwdriver between the protrusions and unscrew.

11 To remove the cutting plate easily,

place a screwdriver between the cutting plate and the head as illustrated and lift up.

(Cleaning)

Remove meat and other food.

Wash each part in warm soapy water.

A little salad oil on (h) ~ (n) after washing and drying will keep them lubricated.

Note:

- A bleaching solution containing chlorine will discolor the aluminum surface.
- Do not immerse the motor housing in water: simply wipe it with a damp cloth.
- Thinners and benzines will crack or change the color of the unit.
- Do not wash any parts in a dishwasher. (It may discolor the aluminum surface.)
- Leaving the parts (d), (g) and (o) wet after cleaning may cause corrosion. Wipe off thoroughly with a dry cloth after cleaning.

Operating Instructions

1. Plug in the meat grinder to the power supply. The meat grinder should be on the OFF mode.
2. To power on the meat grinder, turn the meat grinder knob clockwise and select a speed (3 optional speeds). Adjust the speed to your preference. Increase the speed by turning the knob clockwise and decrease the speed by turning the knob anticlockwise.
3. To reverse the meat grinder direction, make sure the meat grinder is on OFF mode, then turn the knob anticlockwise, hold the knob in this position until the meat grinder reverses. To stop the reverse mode, let go of the knob, the knob should automatically revert to OFF mode

Note:

1. Automatic reverse: If there is something stuck in the meat grinder during operation, the meat grinder will go into self protection mode/ reverse automatically and then continue operating. If there is something stuck again, the self protection mode/ reverse automatically will begin again. If the meat grinder malfunctions/ gets stuck for the third time, the meat grinder will stop operating and enter complete protection mode. The meat grinder operation and knob will stop working. At this time, unplug the meat grinder. Then plug the meat grinder again to restart the machine.
2. Circuit breaker: When the temperature exceeds the inner set temperature, the meat grinder will go into self protection mode and will stop operating and enter complete protection mode. The meat grinder operation and knob will stop working. At this time, unplug the meat grinder. Then plug the meat grinder again to restart the machine. When the inner temperature is under 99 degrees, the meat grinder will restart and operate normally.

