

8. Packing List

| S/N | Description | Qty. (pcs) | Remarks |
|-----|------------------------------|------------|--|
| 1 | Main unit of Sprayer | 1 | Additional parts including expansion link, multi-purpose sprayer head are available for optional purchase. |
| 2 | Manual | 1 | |
| 3 | Gasket ring | 1 | |
| 4 | Conical mist spraying nozzle | 1 | |
| 5 | Four-hole adjustable nozzle | 1 | |
| 6 | Sectorial mist nozzle | 1 | |
| 7 | 30° dual nozzle | 1 | |
| 8 | Cover for opening | 2 | |
| 9 | Mask | 1 | |
| 10 | Certificate of Compliance | 1 | |
| 11 | Warranty Card | 1 | |

7

Table of Contents

| | |
|--|---|
| 1. Overview | 1 |
| 2. Structure and Features | 1 |
| 3. Technical parameters | 2 |
| 4. Operating instructions | 2 |
| 5. Notes | 3 |
| 6. Troubleshooting | 4 |
| 7. Structural diagram and statistics table | 5 |
| 8. Packing list | 7 |

Thank you for purchasing our Power Sprayer. You are required to familiar yourself with this Manual so as to operate and maintain this Sprayer properly.

1. Overview

15L-18L Power Back-mounted Sprayer is elaborately designed by us to cater to the market's demands for a labour-saving and high-efficiency sprayer. Integrating European design with Chinese culture and characterized by safety, efficiency, novel design, unique appearance, streamline outline and coziness of back-mounting, this Sprayer is protected by several state patents, particularly suitable for the pest controlling of crops, flowers, gardens, cleaning of public places and the sanitation and epidemic controlling of livestock and poultry houses. A new generation updated substitute for traditional one. Powered by 12V/10Ah battery, this sprayer is significantly labor-saving and attains an efficiency 3 to 4 times more than manual one. It can be operated continuously for up to 9 hours and spray 400-480 kg liquid after one full charging which consumes only 0.3 kwh of electricity. It can attain excellent atomization result.

2. Structure and Features

Structure: The sprayer consists of a barrel, a base, a battery, a mini-pump, a charger, a spraying system (rubber tubes, switch, spraying rod, nozzle), a strip, castors, etc.

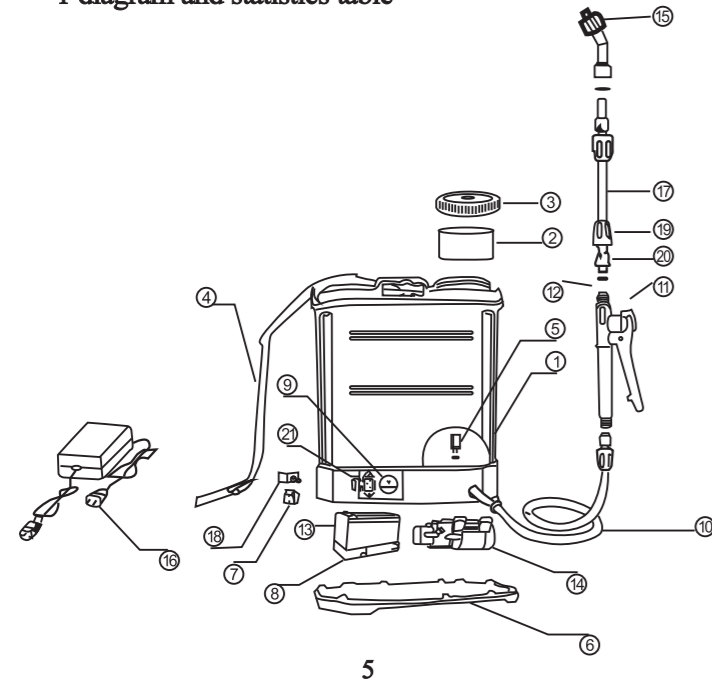
- Features:
- (1) Smooth and streamline appearance. The barrel is ergonomically designed to imitate the back of human to allow cozy mounting.
 - (2) Come with a mini diaphragm pump which is of compact size, light weight, high pressure and extended service life and featuring a pressure protection switch to allow automatic pressure-limit protection.
 - (3) With triple screens protection to prevent foreign matters or particles from clogging the nozzle. The screen is uniquely structured to allow easy dismantle for cleaning.
 - (4) With under-voltage alert circuit. In case of prolonged operation, the alarm will be heard when the voltage of batter decreases to 10.5 V, so as to protect the battery. The supplied charging socket can be used as a 12V power supply in addition to a charging unit.
 - (5) With a special charger: Features intelligent three-section charging (constant current/constant voltage/maintenance) and short-circuit / over-current / inverse-connection protection, The indicator lamps of charger: Red-Charging, Green- Charged/ Stand-by.

1

| S/N | Description |
|-----|-------------------------|
| 1 | Tank |
| 2 | Big filter |
| 3 | Tank cover |
| 4 | Belt |
| 5 | Small filter |
| 6 | Tank bottom |
| 7 | On-off switch |
| 8 | Battery cap |
| 9 | Voltmeter |
| 10 | hos |
| 11 | Handle switch |
| 12 | Cock pin |
| 13 | Battery |
| 14 | Pump |
| 15 | Bozzel |
| 16 | Charger |
| 17 | Lance |
| 18 | Speed control/Regulator |
| 19 | Lance nut |
| 20 | Socket |

6

1 diagram and statistics table



5

3. Technical Parameters

1. Type: Back-mounted
2. Size: 40 x 190 x 555mm
3. Net Weight: 7.4Kg
4. Barrel capacity: 12L、16L、18L、20L、22L
5. Pump: mini diaphragm pump
6. Battery: 12V10Ah (fully enclosed, maintenance free)
7. Charger: Input AC220V, 50Hz, Output DC12V 2A
8. Flow: (double Nozzle): 1.2L/min-2.2L/min

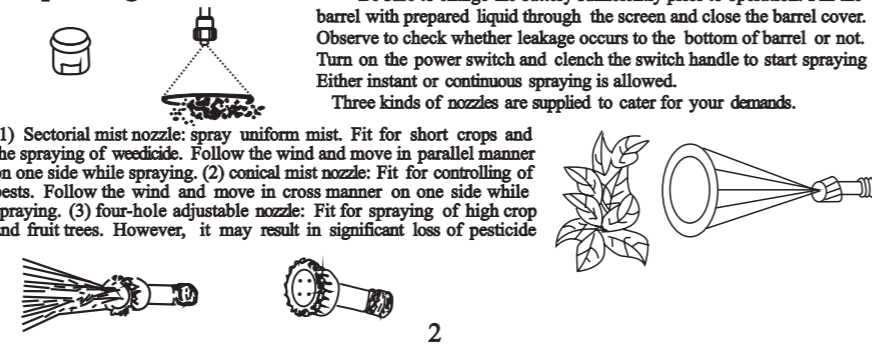
| Spraying nozzle type | Pressure Mpa | Flowrate L/min | Spraying nozzle type | Pressure Mpa | Flowrate L/min |
|-----------------------------|--------------|----------------|----------------------------|--------------|----------------|
| Conical mist nozzle | 0.29-0.32 | 0.7-0.8 | Double Conical mist nozzle | 0.17-0.18 | 1.6-1.7 |
| Sectorial mist nozzle | 0.16-0.17 | 1.2-1.3 | | | |
| Four-hole adjustable nozzle | 0.27-0.28 | 0.8-0.85 | | | |

4. Operating Instructions

Be sure to charge the battery sufficiently prior to operation. Fill the barrel with prepared liquid through the screen and close the barrel cover. Observe to check whether leakage occurs to the bottom of barrel or not. Turn on the power switch and clench the switch handle to start spraying. Either instant or continuous spraying is allowed.

Three kinds of nozzles are supplied to cater for your demands.

- (1) Sectorial mist nozzle: spray uniform mist. Fit for short crops and the spraying of weedicide. Follow the wind and move in parallel manner on one side while spraying.
- (2) conical mist nozzle: Fit for controlling of pests. Follow the wind and move in cross manner on one side while spraying.
- (3) four-hole adjustable nozzle: Fit for spraying of high crop and fruit trees. However, it may result in significant loss of pesticide



2

5. Notes

1. The battery has been charged before being delivered. However, it will self-discharge in the course of transportation and storage. Additional charging before initial use thus is required.
2. Try your best to avoid operating the sprayer without water in it which may damage the diaphragm. Never place the sprayer upside down. Otherwise the battery may be damaged.
3. In case of bumming heard from inside the sprayer or poor atomization after long time use, it shows low batter voltage and requires timely charging. Connect the plug of charge to "Charging" jack without removing the battery from the sprayer. For each charging, a duration of at least 8 hours is required. The charger shall be put at a dry, well-ventilated, safe place over 50 cm high above the ground.
4. Trial spraying with clean water is necessary for initial use, so as to make sure neither leakage nor poor atomization occurs.
5. There are a few points the operator should remember when spraying.
 - Wearing of mask and gloves is required. Never operate with naked body. Never let pesticide contact your body. Never spray the pesticide against the wind. Never spray at human, animals or food. Never operate for a long time under high temperature. Never drink alcohol immediately after spraying. Strict compliance with safety instructions of pesticide manufacturer is required while handling the pesticide.
 - Never operate with such special liquid as strong acid, strong base and flammable goods. Never use high-persistent and very toxic pesticides for pest controlling purposes on vegetables, fruit trees, tee and medical plants.
 - The unit shall be cleaned thoroughly after each use so as to avoid corrosion, clogging and mixing of residual liquid with liquid of next spraying which may do harm to crops or reduce the effects. Cleanign way: for exterior, scrub with a dampened cloth. For interior, fill with small amount of water and shake before turning on the power to discharge.
6. In case of short-term operations, charging is not required for each use. In case of long-term storage, regular full discharging and recharging with an interval of half a month, a month or two months are required to ensure the service life of battery.
7. Don't operate this Sprayer at a place with a temperature exceeding 45°C or lower than -10°C.
8. After use for half a year, you should dismantle the base and check whether the screws loose or not. If loose, please tighten them.
 - ※Be sure to switch off the power before storage.
 - ※It's strictly prohibited to keep this Sprayer near fire or expose the base to water or immerse the machine in the water for cleaning or filling of water.
 - ※Never spray powders or particles with this Sprayer.
 - ※Unauthorized removing of the charger's housing is prohibited.

3

6. Troubleshooting

| Problems | Causes | Solutions |
|--|---|---|
| The motor fails to start after being powered on. | <ul style="list-style-type: none"> • The power cables come off. • The battery is out of power. • The power switch has been damaged | <ul style="list-style-type: none"> • Dismantle the base to connect the cable soundly. • Charging. • Replace the switch. |
| Abnormal sound heard in the motor. | <ul style="list-style-type: none"> • The fastening screws of pump loose. | <ul style="list-style-type: none"> • Tighten the screws. |
| Leakage occurs to the bottom of base | <ul style="list-style-type: none"> • The inlet and outlet tubes of pump break or loose at the joints. | <ul style="list-style-type: none"> • Dismantle the base and tighten the tube clamp; Repair. |
| Poor atomization | <ul style="list-style-type: none"> • The spraying hole was clogged. • Spraying hole and split sheet wore out. • Spraying sheet inversely mounted • Filter screen was clogged. • Leakage occurred to tubes at joints. • Batter short of power • Air remained in the pump. | <ul style="list-style-type: none"> • Remove foreign matters. • Replace the spraying sheet and split sheet • Correct • Clean • Tighten. • The alarm out of order, replace it; charge. • Remove the nozzle or spraying rod to discharge the air. |

4